

Wor-Wic has seven learning pathways to choose from that include credit and non-credit programs and courses.

SEVEN

Pathways of Study

Business & Hospitality



Education & Human Services



Health Care



Humanities & Social Sciences



Public Safety



Skilled Trades & Transportation



STEM



48% of our graduates have transferred to four-year institutions

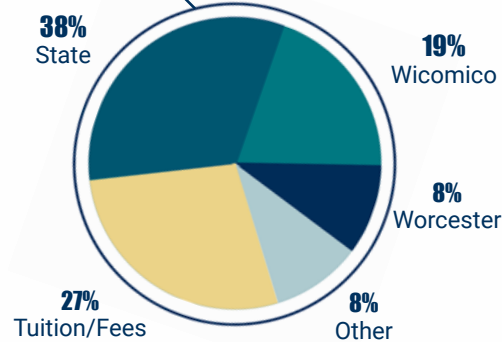
Wor-Wic Community College does not discriminate on the basis of age, gender, race, color, religion, national origin, marital status, sexual orientation, genetic information, gender identity, disability, income level, limited English proficiency or any other characteristic protected by law in the admission and treatment of students, access to educational programs and activities, and the terms and conditions of employment. Questions and complaints should be submitted to Wor-Wic's Title VI and IX coordinators and discrimination investigators. Student complaints should be directed to Dr. Kimberly W. Purvis, associate dean of enrollment management and student services, kpurvis@worwic.edu or 410-334-2902. Employee complaints should be directed to Karen Berkheimer, executive director of human resources, kberkheimer@worwic.edu or 410-334-2915. Complaints can be mailed to the attention of these individuals at Wor-Wic Community College, 32000 Campus Dr., Salisbury MD, 21804.

2/2024

Revenue Sources

	FY 2022 Actual	FY 2023 Actual	FY 2024 Budget
Tuition/Fees	\$8,975,850	\$8,681,908	\$9,708,516
State	10,112,948	12,096,122	13,715,936
Wicomico	6,248,512	6,248,512	6,489,054
Worcester	2,530,242	2,530,242	2,530,242
Other	3,629,173	2,430,392	1,105,000
TOTAL	\$31,496,725	\$31,987,176	\$33,548,748

FY 2023 Budget Breakdown



FY 2023 Efficiency Measures

Cost Per FTE

Wor-Wic	\$15,570
Others	\$20,819**

Net Assignable Square Feet Per FTE

Wor-Wic	86
Others	198**

FTEs/FTE Employee

Wor-Wic	7.1
Others	5.4**

County Contribution /FTE

Wor-Wic	\$4,657
Others	\$7,142**

**average of the other small community colleges in Maryland (Allegany, Carroll, Cecil, Chesapeake, Garrett and Hagerstown)



2024 Facts & Figures

32000 Campus Dr.
Salisbury, Maryland 21804
410-334-2800
worwic.edu

Wor-Wic Community College empowers a diverse population of students to achieve success by delivering high-quality, affordable education, professional training, workforce development opportunities and comprehensive student services that strengthen economic growth and improve the quality of life on the Lower Eastern Shore.

Founded in 1975, the college enrolls more than 7,000 students in almost 2,500 classes each year at its campus in Salisbury and at various locations throughout Maryland's Lower Eastern Shore.

Wor-Wic offers credit programs that lead toward a career-oriented certificate or an associate degree, or fulfill the first two years of a baccalaureate degree for those who want to transfer to a four-year institution.

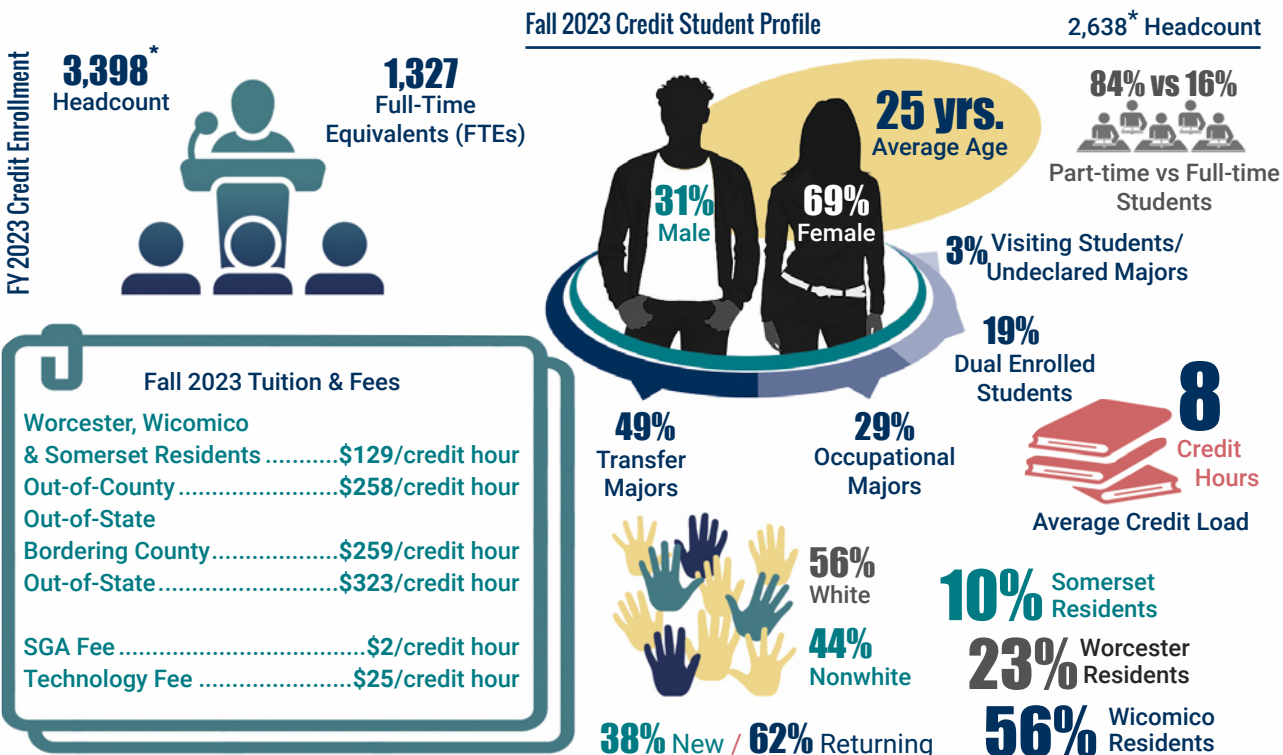
Continuing education and workforce development courses and seminars help students prepare for a career, upgrade existing job skills and provide opportunities for self-improvement.

In FY 2023, 100 employers paid the tuition for almost 1,500 employees to take continuing education courses.

Customized contract training is also provided for local businesses and organizations, such as Draper Media, Jubilant Cadista, Mountaire Farms, Ocean Downs Casino, TidalHealth Peninsula Regional and Salisbury University.

This document is available in alternative formats to individuals with disabilities by contacting disability services at kmohler@worwic.edu, 410-334-2899 or TTY 410-767-6960. Wor-Wic Community College is an equal opportunity educator and employer. Visit [www.worwic.edu/ Services-Support/Disability-Services](http://www.worwic.edu/Services-Support/Disability-Services) to learn more.

Credit Student Profile

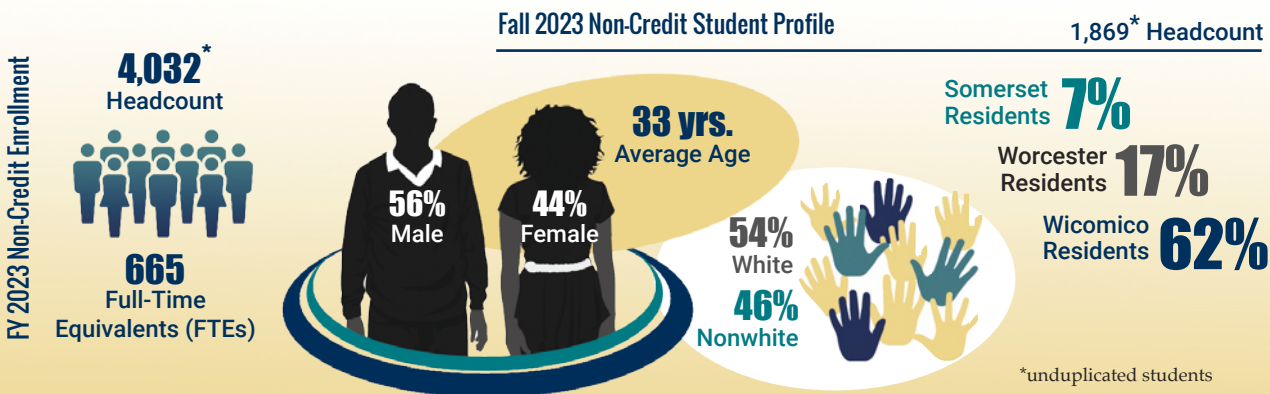


Fall 2023 Credit Student Profile

2,638* Headcount

FY 2023 Credit Enrollment

Continuing Education (Non Credit) Student Profile



Fall 2023 Non-Credit Student Profile

1,869* Headcount

FY 2023 Non-Credit Enrollment

*unduplicated students